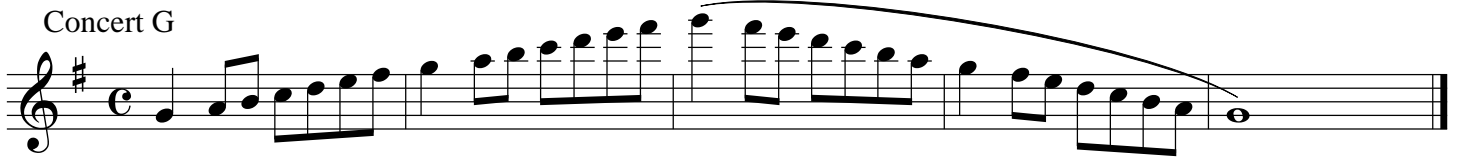


Flute

TMEA Region 7 Audition Scales

Concert G



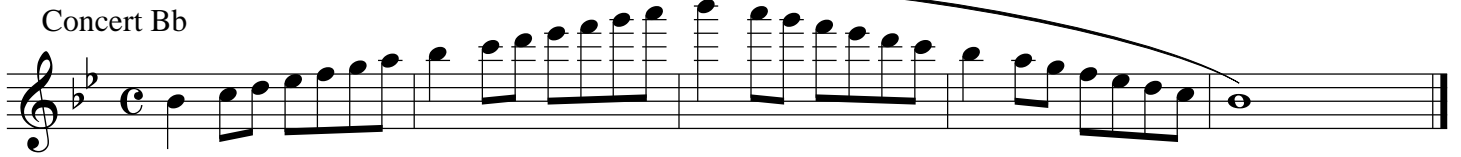
Concert C



Concert F



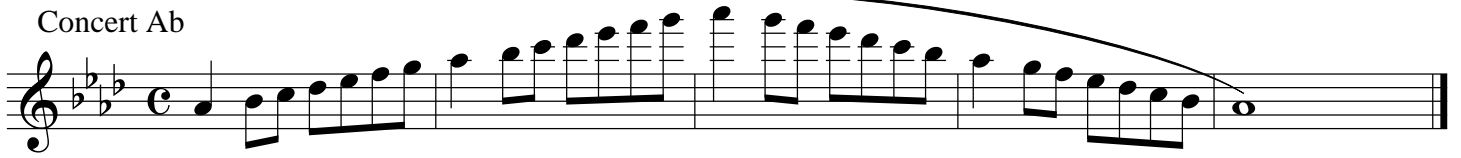
Concert Bb



Concert Eb



Concert Ab



Concert Db



C-Ab Chromatic



Oboe

TMEA Region 7 MS Audition Scales

Concert G



Musical notation for the Concert G scale in treble clef, common time. The scale starts on G4 and ends on G4. It consists of an ascending eighth-note scale (G-A-B-C-D-E-F#-G) and a descending eighth-note scale (F#-E-D-C-B-A-G), with a slur over the entire phrase.

Concert C



Musical notation for the Concert C scale in treble clef, common time. The scale starts on C4 and ends on C4. It consists of an ascending eighth-note scale (C-D-E-F-G-A-B-C) and a descending eighth-note scale (B-A-G-F-E-D-C), with a slur over the entire phrase.

Concert F



Musical notation for the Concert F scale in treble clef, common time. The scale starts on F3 and ends on F3. It consists of an ascending eighth-note scale (F-G-A-B-C-D-E-F) and a descending eighth-note scale (E-D-C-B-A-G-F), with a slur over the entire phrase.

Concert Bb



Musical notation for the Concert Bb scale in treble clef, common time. The scale starts on Bb3 and ends on Bb3. It consists of an ascending eighth-note scale (Bb-C-D-E-F-G-A-Bb) and a descending eighth-note scale (Ab-G-F-E-D-C-Bb), with a slur over the entire phrase.

Concert Eb



Musical notation for the Concert Eb scale in treble clef, common time. The scale starts on Eb3 and ends on Eb3. It consists of an ascending eighth-note scale (Eb-F-G-A-Bb-C-D-Eb) and a descending eighth-note scale (Db-C-Bb-A-G-F-Eb), with a slur over the entire phrase.

Concert Ab



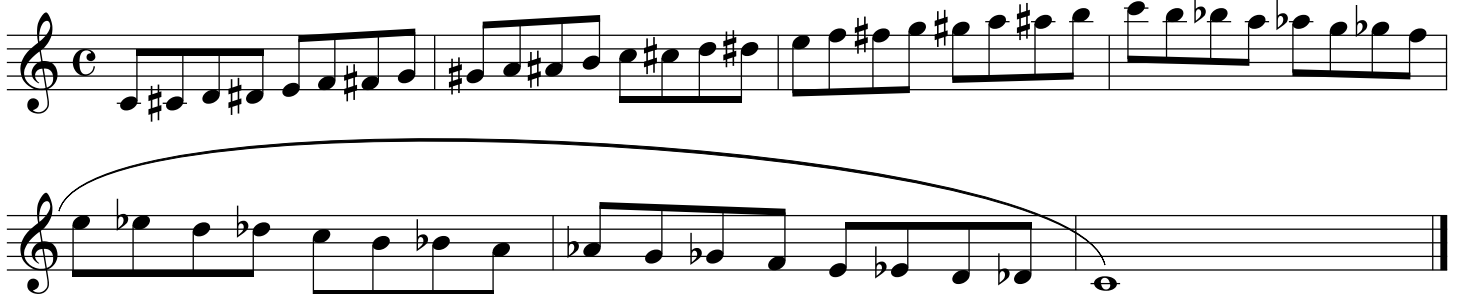
Musical notation for the Concert Ab scale in treble clef, common time. The scale starts on Ab3 and ends on Ab3. It consists of an ascending eighth-note scale (Ab-Bb-C-D-Eb-F-G-Ab) and a descending eighth-note scale (G-F-Eb-D-C-Bb-Ab), with a slur over the entire phrase.

Concert Db



Musical notation for the Concert Db scale in treble clef, common time. The scale starts on Db3 and ends on Db3. It consists of an ascending eighth-note scale (Db-Eb-F-G-Ab-Bb-C-Db) and a descending eighth-note scale (Bb-A-G-F-Eb-D-Db), with a slur over the entire phrase.

C-C Chromatic



Musical notation for the C-C Chromatic scale in treble clef, common time. The scale starts on C4 and ends on C4. It consists of an ascending chromatic scale (C-C#-D-D#-E-E#-F-F#-G) and a descending chromatic scale (F#-F-E#-E-D#-D-C#-C), with a slur over the entire phrase.

Bassoon

TMEA Region 7 Audition Scales

Concert G

Musical staff for Concert G scale in bass clef, common time. The scale starts on G2 and ascends chromatically to G4, then descends chromatically to G2. A slur covers the entire scale.

Concert C

Musical staff for Concert C scale in bass clef, common time. The scale starts on C2 and ascends chromatically to C4, then descends chromatically to C2. A slur covers the entire scale.

Concert F

Musical staff for Concert F scale in bass clef, common time. The scale starts on F1 and ascends chromatically to F4, then descends chromatically to F1. A slur covers the entire scale.

Concert Bb

Musical staff for Concert Bb scale in bass clef, common time. The scale starts on Bb1 and ascends chromatically to Bb4, then descends chromatically to Bb1. A slur covers the entire scale.

Concert Eb

Musical staff for Concert Eb scale in bass clef, common time. The scale starts on Eb1 and ascends chromatically to Eb4, then descends chromatically to Eb1. A slur covers the entire scale.

Concert Ab

Musical staff for Concert Ab scale in bass clef, common time. The scale starts on Ab1 and ascends chromatically to Ab4, then descends chromatically to Ab1. A slur covers the entire scale.

Concert Db

Musical staff for Concert Db scale in bass clef, common time. The scale starts on Db1 and ascends chromatically to Db4, then descends chromatically to Db1. A slur covers the entire scale.

F-F Chromatic

Musical staff for F-F Chromatic scale in bass clef, common time. The scale starts on F2 and ascends chromatically to F4, then descends chromatically to F2. A slur covers the entire scale.

Continuation of the F-F Chromatic scale in bass clef, common time. The scale starts on F3 and descends chromatically to F1. A slur covers the entire scale.

TMEA Region 7 MS Audition Scales

Clarinet in Eb

Concert G (E Major)



Concert C (A Major)



Concert F (D Major)



Concert Bb (G Major)



Concert Eb (C Major)



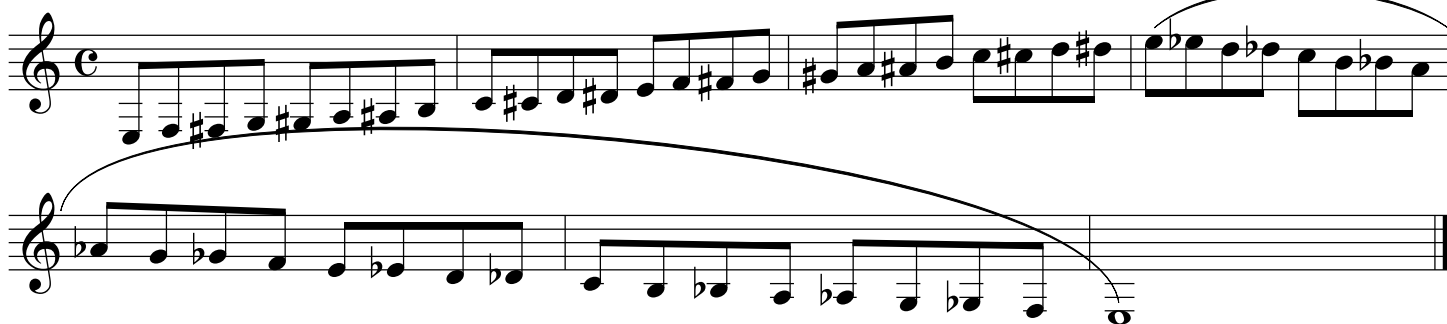
Concert Ab (F Major)



Concert Db (Bb Major)



E-E Chromatic



Clarinet in Bb

TMEA Region 7 MS Audition Scales

Concert G (D Major)

Musical notation for Concert G (D Major) scale. The scale is written on a single staff in treble clef with a key signature of two sharps (F# and C#) and a common time signature (C). It consists of a series of eighth notes ascending from G4 to D5, followed by a series of eighth notes descending from D5 back to G4.

Concert C (D Major)

Musical notation for Concert C (D Major) scale. The scale is written on a single staff in treble clef with a key signature of two sharps (F# and C#) and a common time signature (C). It consists of a series of eighth notes ascending from C5 to D5, followed by a series of eighth notes descending from D5 back to C5.

Concert F (G Major)

Musical notation for Concert F (G Major) scale. The scale is written on a single staff in treble clef with a key signature of one sharp (F#) and a common time signature (C). It consists of a series of eighth notes ascending from F4 to G4, followed by a series of eighth notes descending from G4 back to F4.

Concert Bb (C Major)

Musical notation for Concert Bb (C Major) scale. The scale is written on a single staff in treble clef with a key signature of no sharps or flats and a common time signature (C). It consists of a series of eighth notes ascending from Bb4 to C5, followed by a series of eighth notes descending from C5 back to Bb4.

Concert Eb (F Major)

Musical notation for Concert Eb (F Major) scale. The scale is written on a single staff in treble clef with a key signature of two flats (Bb and Eb) and a common time signature (C). It consists of a series of eighth notes ascending from Eb4 to F4, followed by a series of eighth notes descending from F4 back to Eb4.

Concert Ab (Bb Major)

Musical notation for Concert Ab (Bb Major) scale. The scale is written on a single staff in treble clef with a key signature of three flats (Bb, Eb, and Ab) and a common time signature (C). It consists of a series of eighth notes ascending from Ab4 to Bb4, followed by a series of eighth notes descending from Bb4 back to Ab4.

Concert Db (Eb Major)

Musical notation for Concert Db (Eb Major) scale. The scale is written on a single staff in treble clef with a key signature of four flats (Bb, Eb, Ab, and Db) and a common time signature (C). It consists of a series of eighth notes ascending from Db4 to Eb4, followed by a series of eighth notes descending from Eb4 back to Db4.

E-E Concert

Musical notation for E-E Concert scale. The scale is written on three staves in treble clef with a common time signature (C). The first staff shows the ascending scale from E4 to E5 with a key signature of one sharp (F#). The second staff shows the descending scale from E5 back to E4 with a key signature of one flat (F). The third staff shows a final descending scale from E4 back to E3 with a key signature of two flats (Bb and Eb).

Bass Clarinet

TMEA Region 7 MS Audition Scales

Concert G (A Major)

Musical notation for Concert G (A Major) scale. The scale is written on a single staff in treble clef with a key signature of two sharps (F# and C#) and a common time signature (C). The scale consists of 14 notes: A4, B4, C#5, D5, E5, F#5, G5, F#5, E5, D5, C#5, B4, A4. A slur covers the entire scale, and a fermata is placed over the final A4 note.

Concert C (D Major)

Musical notation for Concert C (D Major) scale. The scale is written on a single staff in treble clef with a key signature of one sharp (F#) and a common time signature (C). The scale consists of 14 notes: D4, E4, F#4, G4, A4, B4, C5, B4, A4, G4, F#4, E4, D4. A slur covers the entire scale, and a fermata is placed over the final D4 note.

Concert F (G Major)

Musical notation for Concert F (G Major) scale. The scale is written on a single staff in treble clef with a key signature of one sharp (F#) and a common time signature (C). The scale consists of 14 notes: G4, A4, B4, C5, D5, E5, F#5, G5, F#5, E5, D5, C5, B4, G4. A slur covers the entire scale, and a fermata is placed over the final G4 note.

Concert Bb (C Major)

Musical notation for Concert Bb (C Major) scale. The scale is written on a single staff in treble clef with a key signature of one flat (Bb) and a common time signature (C). The scale consists of 14 notes: Bb4, C5, D5, E5, F5, G5, Ab5, Bb5, Ab5, G5, F5, E5, D5, Bb4. A slur covers the entire scale, and a fermata is placed over the final Bb4 note.

Concert Eb (F Major)

Musical notation for Concert Eb (F Major) scale. The scale is written on a single staff in treble clef with a key signature of two flats (Bb and Eb) and a common time signature (C). The scale consists of 14 notes: Eb4, F4, G4, Ab4, Bb4, C5, D5, Eb5, F5, G5, Ab5, Bb5, Ab4, F4. A slur covers the entire scale, and a fermata is placed over the final Eb4 note.

Concert Ab (Bb Major)

Musical notation for Concert Ab (Bb Major) scale. The scale is written on a single staff in treble clef with a key signature of three flats (Bb, Eb, and Ab) and a common time signature (C). The scale consists of 14 notes: Ab4, Bb4, C5, D5, Eb5, F5, G5, Ab5, Bb5, Ab4, Bb4, C5, D5, Ab4. A slur covers the entire scale, and a fermata is placed over the final Ab4 note.

Concert Db (Eb Major)

Musical notation for Concert Db (Eb Major) scale. The scale is written on a single staff in treble clef with a key signature of four flats (Bb, Eb, Ab, and Db) and a common time signature (C). The scale consists of 14 notes: Db4, Eb4, F4, G4, Ab4, Bb4, C5, Db5, Eb5, F5, G5, Ab5, Bb5, Db4. A slur covers the entire scale, and a fermata is placed over the final Db4 note.

E-E Chromatic

Musical notation for E-E Chromatic scale. The scale is written on two staves in treble clef with a common time signature (C). The first staff contains the ascending chromatic scale from E4 to E5, and the second staff contains the descending chromatic scale from E5 to E4. A slur covers the entire scale, and a fermata is placed over the final E4 note.

E♭ Saxophone

TMEA Region 7 MS Audition Scales

Concert G (E Major)



Musical notation for Concert G (E Major) scale. The scale is written on a single staff in treble clef with a common time signature (C). It consists of an ascending eighth-note scale followed by a descending eighth-note scale, with a long slur over the final notes.

Concert C (A Major)



Musical notation for Concert C (A Major) scale. The scale is written on a single staff in treble clef with a common time signature (C). It consists of an ascending eighth-note scale followed by a descending eighth-note scale, with a long slur over the final notes.

Concert F (D Major)



Musical notation for Concert F (D Major) scale. The scale is written on a single staff in treble clef with a common time signature (C). It consists of an ascending eighth-note scale followed by a descending eighth-note scale, with a long slur over the final notes.

Concert B♭ (G Major)



Musical notation for Concert B♭ (G Major) scale. The scale is written on a single staff in treble clef with a common time signature (C). It consists of an ascending eighth-note scale followed by a descending eighth-note scale, with a long slur over the final notes.

Concert E♭ (C Major)



Musical notation for Concert E♭ (C Major) scale. The scale is written on a single staff in treble clef with a common time signature (C). It consists of an ascending eighth-note scale followed by a descending eighth-note scale, with a long slur over the final notes.

Concert A♭ (F Major)



Musical notation for Concert A♭ (F Major) scale. The scale is written on a single staff in treble clef with a common time signature (C). It consists of an ascending eighth-note scale followed by a descending eighth-note scale, with a long slur over the final notes.

Concert D♭ (B♭ Major)



Musical notation for Concert D♭ (B♭ Major) scale. The scale is written on a single staff in treble clef with a common time signature (C). It consists of an ascending eighth-note scale followed by a descending eighth-note scale, with a long slur over the final notes.

B♭ - F Chromatic



Musical notation for B♭ - F Chromatic scale, first line. The scale is written on a single staff in treble clef with a common time signature (C). It consists of an ascending eighth-note chromatic scale from B♭ to F.



Musical notation for B♭ - F Chromatic scale, second line. The scale is written on a single staff in treble clef with a common time signature (C). It consists of a descending eighth-note chromatic scale from F to B♭.



Musical notation for B♭ - F Chromatic scale, third line. The scale is written on a single staff in treble clef with a common time signature (C). It consists of a long slur over the final notes of the descending scale.

Tenor Saxophone

TMEA Region 7 MS Audition Scales

Concert G (A Major)



Musical notation for Concert G (A Major) scale, showing a treble clef, key signature of two sharps (F# and C#), and a common time signature (C). The scale is written as a single line of music with a slur over the entire phrase.

Concert C (D major)



Musical notation for Concert C (D major) scale, showing a treble clef, key signature of two sharps (F# and C#), and a common time signature (C). The scale is written as a single line of music with a slur over the entire phrase.

Concert F (G Major)



Musical notation for Concert F (G Major) scale, showing a treble clef, key signature of one sharp (F#), and a common time signature (C). The scale is written as a single line of music with a slur over the entire phrase.

Concert Bb (C Major)



Musical notation for Concert Bb (C Major) scale, showing a treble clef, key signature of two flats (Bb and Eb), and a common time signature (C). The scale is written as a single line of music with a slur over the entire phrase.

Concert Eb (F Major)



Musical notation for Concert Eb (F Major) scale, showing a treble clef, key signature of three flats (Bb, Eb, and Ab), and a common time signature (C). The scale is written as a single line of music with a slur over the entire phrase.

Concert Ab (Bb Major)



Musical notation for Concert Ab (Bb Major) scale, showing a treble clef, key signature of four flats (Bb, Eb, Ab, and Db), and a common time signature (C). The scale is written as a single line of music with a slur over the entire phrase.

Concert Db (Eb Major)



Musical notation for Concert Db (Eb Major) scale, showing a treble clef, key signature of five flats (Bb, Eb, Ab, Db, and Gb), and a common time signature (C). The scale is written as a single line of music with a slur over the entire phrase.

Bb - F Chromatic



Musical notation for Bb - F Chromatic scale, showing a treble clef, key signature of two flats (Bb and Eb), and a common time signature (C). The scale is written as three lines of music, with a slur over the entire phrase.

Trumpet in Bb

TMEA Region 7 MS/JH Audition Scales

Concert G (A Major)

Musical notation for Concert G (A Major) scale. The key signature has two sharps (F# and C#) and the time signature is common time (C). The scale is written on a single staff, starting on G4 and ending on G4. It consists of two phrases: an ascending eighth-note scale and a descending eighth-note scale, both with a slur over the entire phrase.

Concert C (D major)

Musical notation for Concert C (D major) scale. The key signature has two sharps (F# and C#) and the time signature is common time (C). The scale is written on a single staff, starting on C4 and ending on C4. It consists of two phrases: an ascending eighth-note scale and a descending eighth-note scale, both with a slur over the entire phrase.

Concert F (G Major)

Musical notation for Concert F (G Major) scale. The key signature has one sharp (F#) and the time signature is common time (C). The scale is written on a single staff, starting on F3 and ending on F3. It consists of two phrases: an ascending eighth-note scale and a descending eighth-note scale, both with a slur over the entire phrase.

Concert Bb (C Major)

Musical notation for Concert Bb (C Major) scale. The key signature has no sharps or flats and the time signature is common time (C). The scale is written on a single staff, starting on Bb3 and ending on Bb3. It consists of two phrases: an ascending eighth-note scale and a descending eighth-note scale, both with a slur over the entire phrase.

Concert Eb (F Major)

Musical notation for Concert Eb (F Major) scale. The key signature has three flats (Bb, Eb, and Ab) and the time signature is common time (C). The scale is written on a single staff, starting on Eb3 and ending on Eb3. It consists of two phrases: an ascending eighth-note scale and a descending eighth-note scale, both with a slur over the entire phrase.

Concert Ab (Bb Major)

Musical notation for Concert Ab (Bb Major) scale. The key signature has three flats (Bb, Eb, and Ab) and the time signature is common time (C). The scale is written on a single staff, starting on Ab3 and ending on Ab3. It consists of two phrases: an ascending eighth-note scale and a descending eighth-note scale, both with a slur over the entire phrase.

Concert Db (Eb Major)

Musical notation for Concert Db (Eb Major) scale. The key signature has four flats (Bb, Eb, Ab, and Db) and the time signature is common time (C). The scale is written on a single staff, starting on Db3 and ending on Db3. It consists of two phrases: an ascending eighth-note scale and a descending eighth-note scale, both with a slur over the entire phrase.

G-G Chromatic

Musical notation for G-G Chromatic scale. The key signature has no sharps or flats and the time signature is common time (C). The scale is written on a single staff, starting on G4 and ending on G4. It consists of two phrases: an ascending chromatic scale and a descending chromatic scale, both with a slur over the entire phrase.

Horn in F

TMEA Region 7 MS/JH Audition Scales

Concert G (D Major)

Musical notation for Concert G (D Major) scale. The scale is written in treble clef with a key signature of one sharp (F#) and a common time signature (C). The scale consists of two lines of music. The first line contains the ascending scale: G4, A4, B4, C5, D5, E5, F#5, G5. The second line contains the descending scale: G5, F#5, E5, D5, C5, B4, A4, G4. A slur covers the entire scale.

Concert C (G Major)

Musical notation for Concert C (G Major) scale. The scale is written in treble clef with a key signature of one sharp (F#) and a common time signature (C). The scale consists of two lines of music. The first line contains the ascending scale: G4, A4, B4, C5, D5, E5, F#5, G5. The second line contains the descending scale: G5, F#5, E5, D5, C5, B4, A4, G4. A slur covers the entire scale.

Concert F (C major)

Musical notation for Concert F (C major) scale. The scale is written in treble clef with a common time signature (C). The scale consists of two lines of music. The first line contains the ascending scale: C4, D4, E4, F4, G4, A4, B4, C5. The second line contains the descending scale: C5, B4, A4, G4, F4, E4, D4, C4. A slur covers the entire scale.

Concert Bb (F Major)

Musical notation for Concert Bb (F Major) scale. The scale is written in treble clef with a key signature of one flat (Bb) and a common time signature (C). The scale consists of two lines of music. The first line contains the ascending scale: Bb4, C5, D5, Eb5, F5, G5, Ab5, Bb5. The second line contains the descending scale: Bb5, Ab5, G5, F5, Eb5, D5, C5, Bb4. A slur covers the entire scale.

Concert Eb (Bb Major)

Musical notation for Concert Eb (Bb Major) scale. The scale is written in treble clef with a key signature of two flats (Bb, Eb) and a common time signature (C). The scale consists of two lines of music. The first line contains the ascending scale: Eb4, F4, G4, Ab4, Bb4, C5, Db5, Eb5. The second line contains the descending scale: Eb5, Db5, C5, Bb4, Ab4, G4, F4, Eb4. A slur covers the entire scale.

Concert Ab (Eb Major)

Musical notation for Concert Ab (Eb Major) scale. The scale is written in treble clef with a key signature of three flats (Bb, Eb, Ab) and a common time signature (C). The scale consists of two lines of music. The first line contains the ascending scale: Ab4, Bb4, C5, Db5, Eb5, F5, Gb5, Ab5. The second line contains the descending scale: Ab5, Gb5, F5, Eb5, Db5, C5, Bb4, Ab4. A slur covers the entire scale.

Concert Db (Ab Major)

Musical notation for Concert Db (Ab Major) scale. The scale is written in treble clef with a key signature of four flats (Bb, Eb, Ab, Db) and a common time signature (C). The scale consists of two lines of music. The first line contains the ascending scale: Db4, Eb4, F4, Gb4, Ab4, Bb4, C5, Db5. The second line contains the descending scale: Db5, C5, Bb4, Ab4, Gb4, F4, Eb4, Db4. A slur covers the entire scale.

F-F Chromatic

Musical notation for F-F Chromatic scale. The scale is written in treble clef with a common time signature (C). The scale consists of two lines of music. The first line contains the ascending chromatic scale: F4, F#4, G4, G#4, A4, A#4, B4, B#4, C5. The second line contains the descending chromatic scale: C5, Bb4, B4, Ab4, A4, Gb4, G4, Fb4, F4. A slur covers the entire scale.

Trombone/Baritone

TMEA Region 7 MS/JH Audition Scales

Concert G

Concert G scale in G major, 4/4 time. The scale consists of 12 notes: G2, A2, B2, C3, D3, E3, F#3, G3, A3, B3, C4, G3. The notes are written on a bass clef staff with a common time signature. A slur covers the notes from G3 to C4.

Concert C

Concert C scale in C major, 4/4 time. The scale consists of 12 notes: C2, D2, E2, F2, G2, A2, B2, C3, D3, E3, F3, C3. The notes are written on a bass clef staff with a common time signature. A slur covers the notes from C3 to F3.

Concert F

Concert F scale in F major, 4/4 time. The scale consists of 12 notes: F2, G2, A2, Bb2, C3, D3, E3, F3, G3, A3, Bb3, F3. The notes are written on a bass clef staff with a common time signature and one flat in the key signature. A slur covers the notes from F3 to Bb3.

Concert Bb

Concert Bb scale in Bb major, 4/4 time. The scale consists of 12 notes: Bb2, C3, D3, Eb3, F3, G3, Ab3, Bb3, C4, D4, Eb4, Bb3. The notes are written on a bass clef staff with a common time signature and two flats in the key signature. A slur covers the notes from Bb3 to Eb4.

Concert Eb

Concert Eb scale in Eb major, 4/4 time. The scale consists of 12 notes: Eb2, F2, G2, Ab2, Bb2, C3, D3, Eb3, F3, G3, Ab3, Eb3. The notes are written on a bass clef staff with a common time signature and three flats in the key signature. A slur covers the notes from Eb3 to Ab3.

Concert Ab

Concert Ab scale in Ab major, 4/4 time. The scale consists of 12 notes: Ab2, Bb2, C3, Db3, Eb3, F3, G3, Ab3, Bb3, C4, Db4, Ab3. The notes are written on a bass clef staff with a common time signature and four flats in the key signature. A slur covers the notes from Ab3 to Db4.

Concert Db

Concert Db scale in Db major, 4/4 time. The scale consists of 12 notes: Db2, Eb2, F2, Gb2, Ab2, Bb2, C3, Db3, Eb3, F3, Gb3, Db3. The notes are written on a bass clef staff with a common time signature and five flats in the key signature. A slur covers the notes from Db3 to Gb3.

F-F Chromatic

F-F Chromatic scale in F major, 4/4 time. The scale consists of 24 notes: F2, F#2, G2, G#2, A2, A#2, B2, B#2, C3, C#3, D3, D#3, E3, E#3, F3, F#3, G3, G#3, A3, A#3, B3, B#3, C4, B3, A3, G3, F3. The notes are written on a bass clef staff with a common time signature. A slur covers the entire scale.

Tuba

TMEA Region 7 MS/JH Audition Scales

Concert G

Musical notation for the Concert G scale in bass clef, common time (C). The scale consists of two lines of eighth notes: G2-A2-B2-C3, D3-E3-F3-G3, A3-B3-C4, and D4-E4-F4-G4. A slur covers the second line, and a fermata is placed over the final G4 note.

Concert C

Musical notation for the Concert C scale in bass clef, common time (C). The scale consists of two lines of eighth notes: C2-D2-E2-F2, G2-A2-B2-C3, D3-E3-F3-G3, and A3-B3-C4. A slur covers the second line, and a fermata is placed over the final C4 note.

Concert F

Musical notation for the Concert F scale in bass clef, common time (C). The scale consists of two lines of eighth notes: F2-G2-A2-B2, C3-D3-E3-F3, G3-A3-B3-C4, and D4-E4-F4. A slur covers the second line, and a fermata is placed over the final F4 note.

Concert Bb

Musical notation for the Concert Bb scale in bass clef, common time (C). The scale consists of two lines of eighth notes: Bb2-Cb2-Db2-Eb2, Fb2-Gb2-Ab2-Bb2, C3-D3-E3-F3, and G3-A3-B3-C4. A slur covers the second line, and a fermata is placed over the final Bb3 note.

Concert Eb

Musical notation for the Concert Eb scale in bass clef, common time (C). The scale consists of two lines of eighth notes: Eb2-Fb2-Gb2-Ab2, Bb2-Cb2-Db2-Eb2, Fb2-Gb2-Ab2-Bb2, and C3-D3-E3-F3. A slur covers the second line, and a fermata is placed over the final Eb2 note.

Concert Ab

Musical notation for the Concert Ab scale in bass clef, common time (C). The scale consists of two lines of eighth notes: Ab2-Bb2-Cb2-Db2, Eb2-Fb2-Gb2-Ab2, Bb2-Cb2-Db2-Eb2, and Fb2-Gb2-Ab2. A slur covers the second line, and a fermata is placed over the final Ab2 note.

Concert Db

Musical notation for the Concert Db scale in bass clef, common time (C). The scale consists of two lines of eighth notes: Db2-Eb2-Fb2-Gb2, Ab2-Bb2-Cb2-Db2, Eb2-Fb2-Gb2-Ab2, and Bb2-Cb2-Db2. A slur covers the second line, and a fermata is placed over the final Db2 note.

F-F Chromatic

Musical notation for the F-F Chromatic scale in bass clef, common time (C). The scale consists of two lines of eighth notes: F2-Gb2-Ab2-Bb2, Cb2-Db2-Eb2-Fb2, Gb2-Ab2-Bb2-Cb2, and Db2-Eb2-Fb2-Gb2. A slur covers the second line, and a fermata is placed over the final Fb2 note.